

Science

chapter 5. "Plants in the surroundings"

Presented by Mrs Suruchi Saraff

1.Short- answer questions

a. Name any two plants whose roots store food.

Ans- Two plants whose roots store food are carrot and radish.

b.Name three things that a seed needs to germinate.

Ans- Three things that a seed needs to germinate are air, water and sunlight.

c. Which gas is released when plants make food ?

Ans-Oxygen gas is released when plants make food .

d. Write any two uses of the stem.

Ans- Two uses of stem are as follows-

i. The stem helps most plants to stand straight.

ii. It carries water and minerals from the roots to the leaves.

e. Which part of a plant has seeds inside it ?

Ans- Most fruits have seeds inside them.

f. What is chlorophyll ?

Ans- Leaves are usually green due to the presence of a green substance called chlorophyll in them.

g. What are the two different types of roots?

Ans- Two different types of roots are

i. tap root. and. ii. fibrous root

2. Long – answer questions

a. What is germination ?

Ans- When a seed is put into the soil ,and it gets enough water, sunlight and air,it grows into a new plant. This is called germination.

b. Define photosynthesis ?

Ans- Green leaves make food for the plant using air (carbon dioxide) water and minerals in the presence of sunlight . This process is known as photosynthesis .

c. Write a short note on caring for plants ?

Ans- we should take care of the plants in the following ways –

- i. Soil should be tilled before planting seeds .
- ii. Proper gap should be maintained while planting .

- iii. Plants should be watered regularly .
 - iv. Ensure they get enough sunlight .
 - v. Unwanted plants should be removed.
-

d. Differentiate between weak stems and strong stems.

Ans- weak stems - Weak stems cannot hold the plant upright. Such plants need support to stand. Weak stems are found in creepers that grow along the ground(watermelon) and climbers that grow with a support (money plant).

Strong stems- can hold the plant upright.Strong stems can be soft, hard or woody. Herbs like coriander have soft stems. Shrubs like rose have thin woody stems.Trees like the coconut tree have hard stems.

E. Briefly describe the different types of seeds.

Ans: There are two types of seeds:

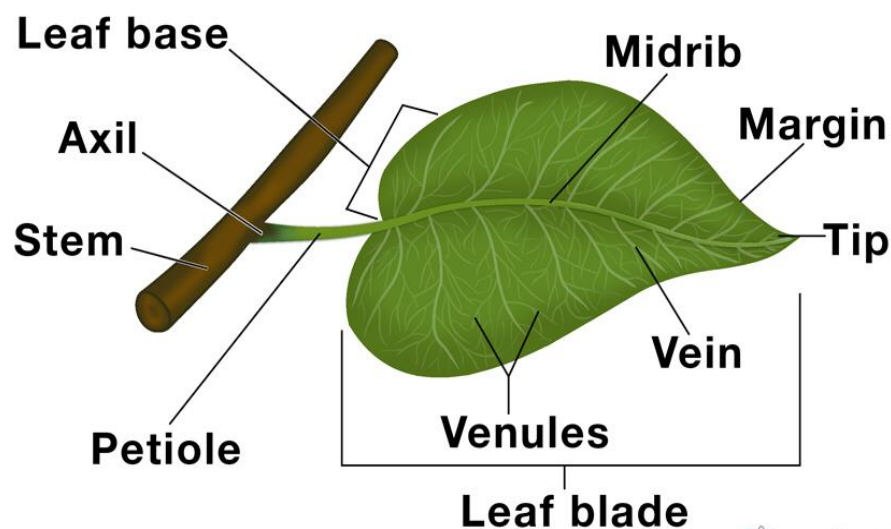
Monocot seeds : they have only one cotyledon (seed leaf) inside them. The cotyledon does not store food. For example, rice and grass.

Dicot seeds : They have two cotyledons (seed leaves) inside. The cotyledons store food. For example, mango ,pea and bean seeds.

F. Draw a well labelled diagram of the parts of a leaf and right functions of its parts.

Ans:

Parts of a Leaf



The right functions are:

- Leaf blade: the flat surface part of the leaf.
- Veins: The fine lines seen on the leaf blade.
- Midrib : The long and thick central vein.
- Stalk: helps to attach the leaf to the stem.